

PART OF SECTION 32, T.7N., R.1E., S.L.B. & M.

# SILVER BELL ESTATES NO. 1

LOTS 28-40

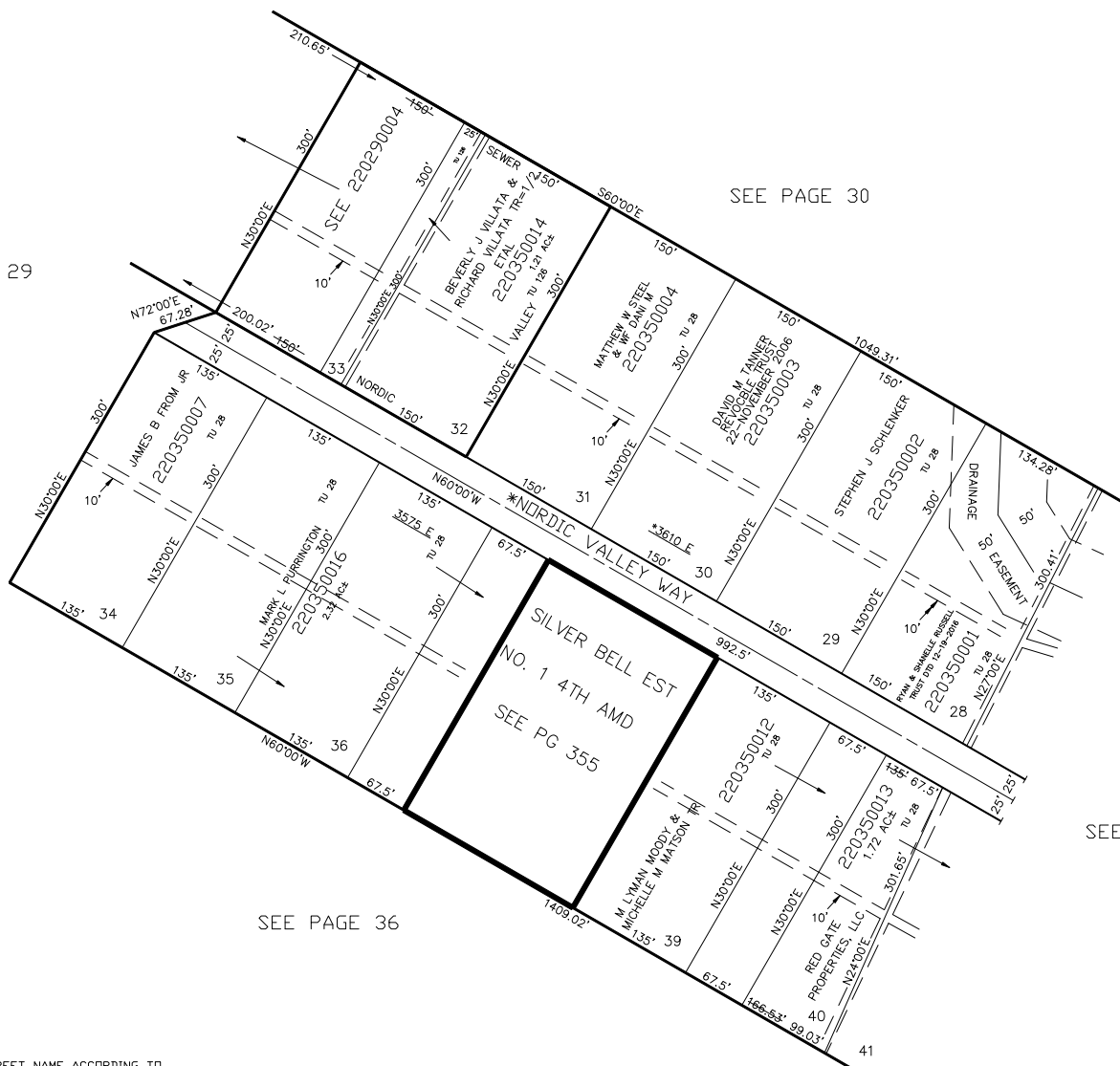
IN WEBER COUNTY

SCALE 1" = 100'

TAXING UNIT: 28, 126

SEE PAGE 30

SEE PAGE 29



SEE PAGE 34

SEE PAGE 36

\*NOTE: STREET NAME ACCORDING TO  
COUNTY SURVEYOR'S OFFICE.

FOR COMPLETE ENG DATA SEE  
ORIGINAL DEDICATION PLAT IN  
BOOK 12, PAGE 90 OF RECORDS.

ALL ROADS IN THIS SUBDIVISION  
ARE OWNED BY WEBER COUNTY  
SEE 22-032-0028

ALL UTILITY EASEMENTS ARE  
10 FEET WIDE.  
THE DRAINAGE EASEMENT  
IS 100 FEET WIDE.

\*ADDRESS AFFIDAVIT E#2956741